

Network Managed Services

The rapid changes in network technologies can vastly change network traffic patterns, bandwidth requirements, access locations, and security needs. The key enabler of digital transformation is an available, high performing and secured network. Digital enterprises require a network infrastructure that provides adequate performance, security, agility, and manageability to support digital initiatives, now and into the future.

Trace3 managed network services empowers organizations to deliver digital transformation. Our services are designed to deliver high quality customer experiences with best practice monitoring for increased availability and performance across software defined and legacy technology infrastructures.

Challenges with Modern Networks



MONITORING

Lack of 24x7 vigilant monitoring and optimization impacts optimal network performance.



PRODUCTIVITY

Inconsistent network, cloud connectivity, and utilization of WAN links leads to application failure and faltering productivity.



VISIBILITY

Lack on on-demand visibility into remote branch office networks and applications.



SKILLS

Skillset availability for NexGen technologies impacts continuous optimization of your network for availability and performance.



RESPONSE TIME

Slow response to configuration changes increases outages and also leads to operating in a compromised mode.

Modern network services offer a single-pane-of-glass visibility, governance, and end-to-end management of both modern and traditional infrastructures. Our network services enable a simple and secure centralized experience with rapid go-live and faster time to value. Powered by industry acclaimed processes and technology platforms, Netenrich provides a comprehensive solution for monitoring, managing, and optimizing your on-premises and public cloud networks.

Network Managed Services

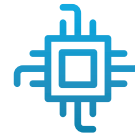
Network Services Technology Portfolio



Monitoring and service alerts



Incident management and resolution



Circuit management



Service requests and MACDs



Configuration Management



Complete Visibility

Why Trace3 and Netenrich?

- 13-plus years' network, security, cloud operations
- More than 6,000 enterprise customers
- Over 140 integrations with market-leading vendors
- More than 1 billion data points analyzed per month
- 300 million threat signals processed per month
- 600 analysts, experts, engineers, across three locations

Why Us for Network Managed Services?

<p>Industrialization</p> <p>Over 100+ packaged service offerings</p> <p>In excess of 200 productized services</p>	<p>Shared services POD</p> <p>4K+ end clients managed using a single integrated platform</p>	<p>Network and UC Managed Services</p> <p>300K+ devices managed</p> <p>140K+ integrations</p>
<p>Monitoring Best Practices</p> <p>1500+ templates</p> <p>200+ custom monitoring solutions across technologies</p>	<p>Incident Management</p> <p>55K+ Network & UC incidents managed</p> <p>3K+ SOPs build so far across all technology towers</p>	<p>Automation</p> <p>600+ automations for incident resolution</p>
<p>Noise Reduction</p> <p>80% Noise reduced with hybrid intelligence</p>	<p>Knowledge Repository</p> <p>1000+ best practice knowledge articles across technologies</p>	<p>Certified and compliant</p> <p>ISO27001, HIPPA, PCI, GDPR & SOC2 TYPE 2</p>

To learn more or to engage our Network Managed Service specialists, visit <https://www.trace3.com/services/managed-services>.